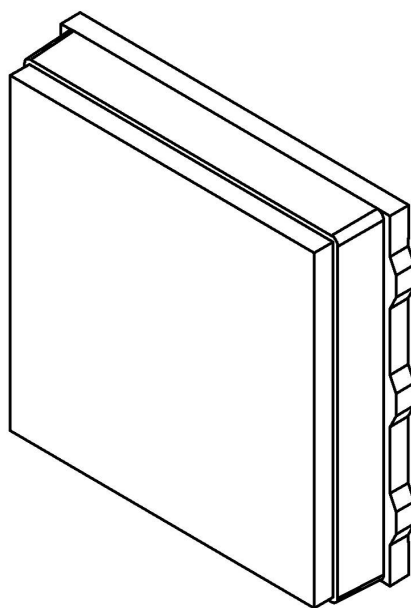


UVSMD5050-405-60-003



UVSMD5050-405-60-003

405nm HIGH POWER LED



Features

- Chip size: 1.05×1.05mm
- Number of Chips: 1pc
- Peak Wavelength: 405nm
- Optical efficiency (typ.) : 1250mW
- Viewing half angle: 60°
- Package : SMD Resin package
- Lens: Glass

UVSMD5050-405-60-003

Maximum Ratings (Tc=25°C)

Parameter	Symbol	Values	Unit
Power Dissipation	P_D	2940	mW
Forward Current	I_F	700	mA
Pulse Forward Current	I_{FP}	1000	mA
Reverse Voltage	V_R	-	V
Junction Temperature	T_j	125	°C
Operating Temperature	T_{opr}	-30~85	°C
Storage Temperature	T_{stg}	-40~100	°C
Thermal Resistance	R_{thja}	10	K/W

※Pulse Forward Current Condition : Duty 1% and Pulse Width=1ms.

※Soldering condition : Soldering condition must be completed with 5 seconds at below 260°C

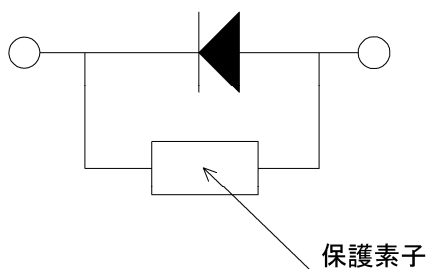
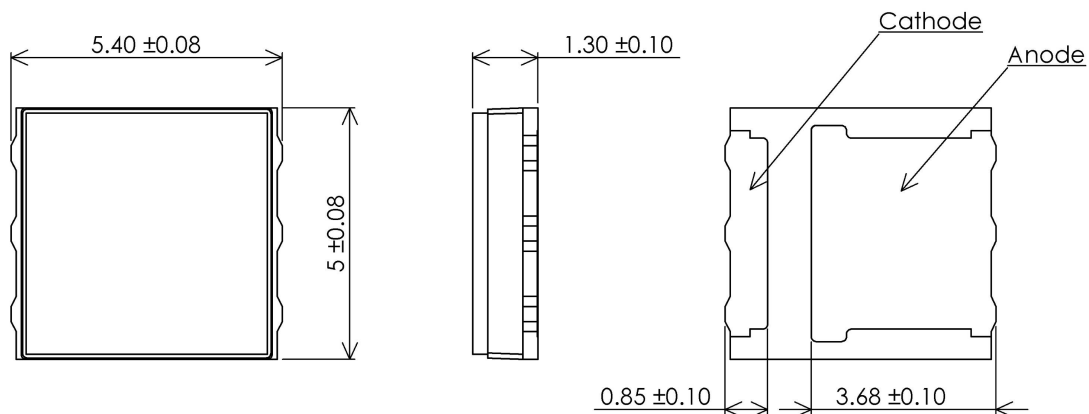
Optical and Electrical Characteristics (Tc=25°C)

Parameter	Symbol	Min	Typ	Max	Unit	Test Condition
Forward Voltage	V_F		3.5	4.2	V	$I_F=700mA$
	V_{FP}		3.7		V	$I_{FP}=1000mA$
Radiated Power	P_O		1250		mW	$I_F=700mA$
			1900		mW	$I_{FP}=1000mA$
Peak Wavelength	λ_p		405		nm	$I_F=700mA$
Half Width	$\Delta \lambda$		12		nm	$I_F=700mA$
Viewing Half Angle	$\theta 1/2$		± 60		deg	$I_F=100mA$

※Radiated Power is measured by S3584-08.

UVSMD5050-405-60-003

Outline and Internal Circuit



Nov.2018